



Part number

# CHIR 48 LS



## Brief description:

bulkhead mounting housings with single lever, size "104.62" 180°C version, metal cover, 180 °C version, IP65

Product description		Approvals / Standards	
Version	180 °C version	Quality mark	 (type:4/4X/12),  , EAC
Series	bulkhead mounting housings with single lever	Conformity	CQC, CE
Product type	with 1 lever	General ordering information	
Variant	metal cover	EAN13 code	8015747019156
Family	CLASS enclosures	Tariff number	85369095
Size	size "104.62" 180°C version	Packaging Information	
Technical data		Packaging length	180,00 mm
Operating temperature range (min, max)	-40°C ... +180°C	Packaging height	160,00 mm
Material	metal	Packaging width	300,00 mm
IP degree of protection	IP65	Packaging weight	2,85 kg
Further technical details		Packaging volume	8,64 dm <sup>3</sup>
Weight	713,00 g	Packaging description	Carton box
		Packaging quantity	4 Pcs
		Packaging EAN code	8015747019163
		Sub-packaging weight	0,71 kg
		Sub-packaging description	Plastic packaging
		Sub-packaging quantity	1 Pcs
		Sub-packaging EAN barcode	8015747019170

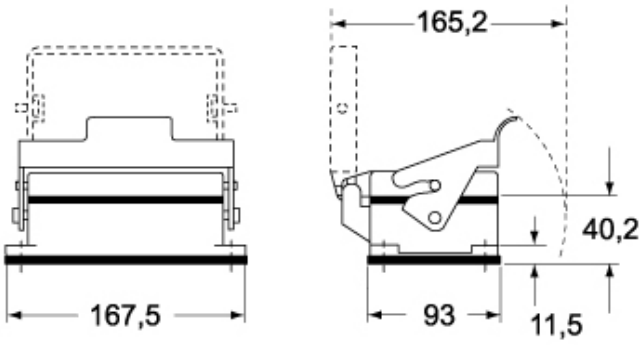
Part number

# CHIR 48 LS

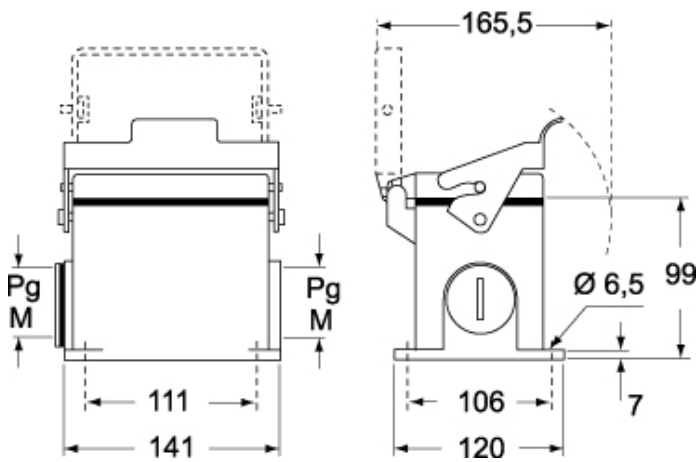


Catalogue drawings

## CHIR LS



## CHPR LS - MHPR LS



Catalogue drawings

